

Custom House Maritime Museum

*your local, independent, community museum - open year-round -
telling the stories of New London's waterfront!*



Principal Front

See working drawing. RM

Robt. Miller
archt

2019 — the year so far at the Custom House

















Connecting to Collections Care

RE-ORG Webinar4 - Storage Solutions.pptx

RE-ORG Angels Project 2019 – AIC's 47th Annual Meeting

**New London Maritime Society
Custom House Maritime Museum
New London, CT, USA**

Monday, May 13th 2019
9 a.m. to 5 p.m.



For more info: <https://aics47thannualmeeting2019.sched.com/event/lvIB/re-org-angels-project-new-london-maritime-museum>

Sign up to volunteer
by emailing your CV to Ruth Seyler at rseyler@culturalheritage.org



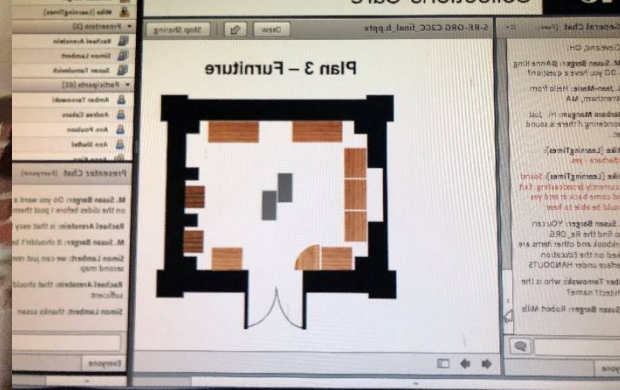




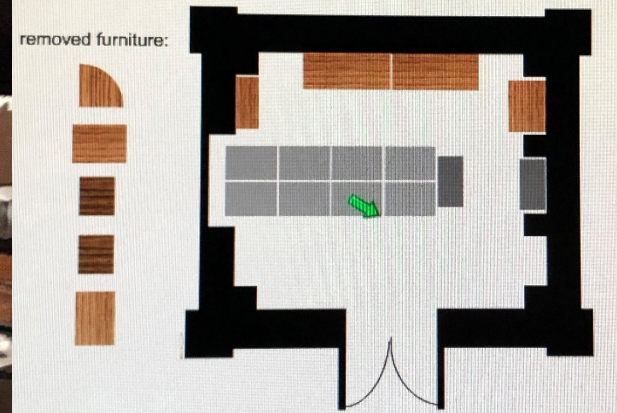
RE-ORG
SAVING COLLECTIONS IN STORAGE



FROM



2. Create storage systems that are better adapted to the collection's needs







JIBBOOM CLUB

JIBBOOM CLUB
NO. 1
NEW LONDON, CONN.



DHS S&T PIADC Science Program





LIFE JACKET
LOANER
NEED A LIFE JACKET?





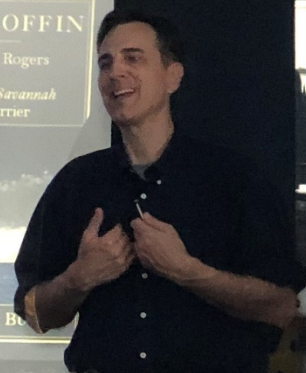
Building
the
First "Steamship"
in
History

STEAM COFFIN

Captain Moses Rogers
and
The Steamship *Savannah*
Break the Barrier



JOHN LAURENCE B...

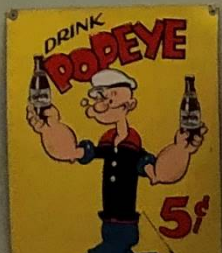




JIBBOON CASE
NO. 1
NEW LONDON, CONN.









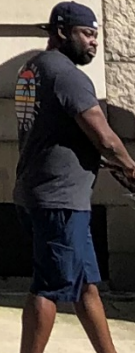


NEW LONDON MARITIME SOCIETY

m
u
s
e
u
m

CIVIC
MAR
MU

8







New London Harbor Light - A Brief Timeline

1646 - John Winthrop founds the first English settlement on the Thames River, in the Colony of Connecticut.

1715 - a lighthouse is built off Boston, the first in the north American colonies.

1730s - New London's first 'beacon' is established at Harris Point on the west bank of the 'Harbour's Mouth', (where the Thames River meets Long Island Sound). It's purpose is to provide warning against an approach by the French fleet

1759 - under King George II, land is purchased to establish a true lighthouse.

Lighthouses, like forts, were considered part of the coastal defense system.

1761 - Harbor Lighthouse is constructed at a cost of £715, (roughly \$285,000).

New London Harbor Light is the first lighthouse built on Long Island Sound

New London's lighthouse is first lit the night of November 7, 1761.

1765--1783 - The American Revolutionary War

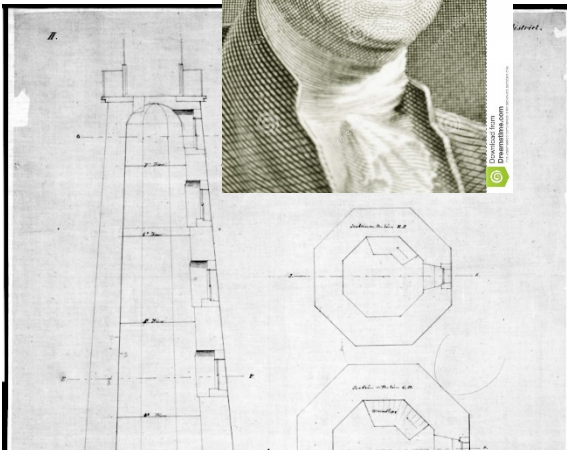
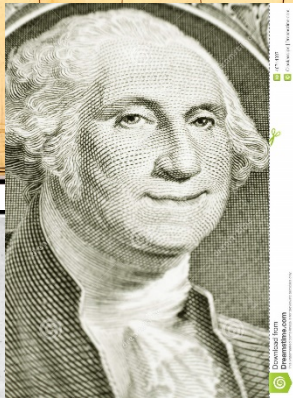
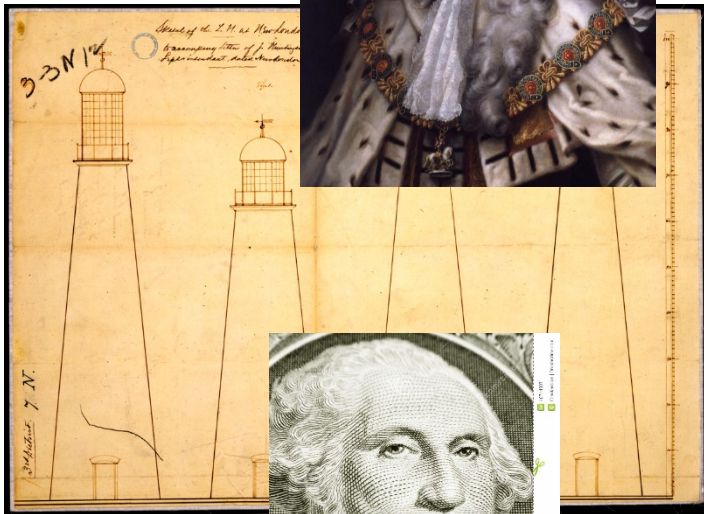
1789 The United States Lighthouse Establishment is created under the U.S. Treasury, and local administration of lighthouses is handled by U.S. Customs agents. Harbor Light becomes the fourth of the original 12 colonial lights that the young United States government manages under its newly established Lighthouse Board .

1790 - Harbor lighthouse is ceded to the United States, according to the Memoranda of Cessions by Connecticut.

1791 - George Washington, himself, signs a contract authorizing the expenditure of \$360 quarterly to supply New London Harbor Light's six lamps with spermaceti whale oil, with the Act for the Establishment and support of Lighthouse, Beacons, Buoys, and Public Piers.

1800 - Congress appropriates \$15,700 "for rebuilding, altering, and improving the lighthouse at New London, Conn."

1801 - Abisha Woodward of New London completes construction of the new (current) lighthouse. Originally left unpainted, the tower is whitewashed some time in the mid-19th century. It is now the oldest and tallest lighthouse in Connecticut.



The United States of America
donated this property to the
New London Maritime Society
for preservation and public use
through the National Historic
Lighthouse Preservation Act.
This program is administered by
the National Park Service.

October 13, 2010









Li
off N



CAUTION
RE











NEW LONDON CT



1833